

A Giant Jurassic Croc with T. Rex Teeth



Paleoartistic restoration of *Razanandrongobe sakalavae* scavenging on a sauropod carcass in the Middle Jurassic of Madagascar. Unlike extant crocodylians, this terrestrial predator had a deep skull and walked on erect limbs.

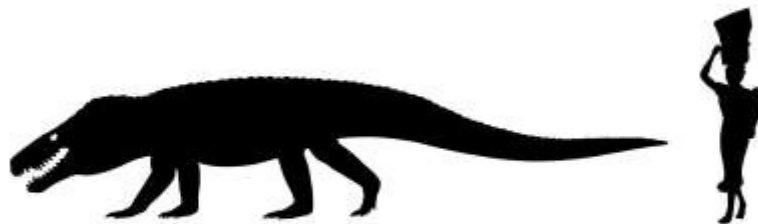


Paleontologists Cristiano Dal Sasso (right) and Simone Maganuco (left) exhibit some skull bones of *Razanandrongobe sakalavae* at the Natural History Museum of Milan. The teeth are enormous, approaching in shape and size those of a T. rex. The tip of a shed tooth shows a deeply worn surface

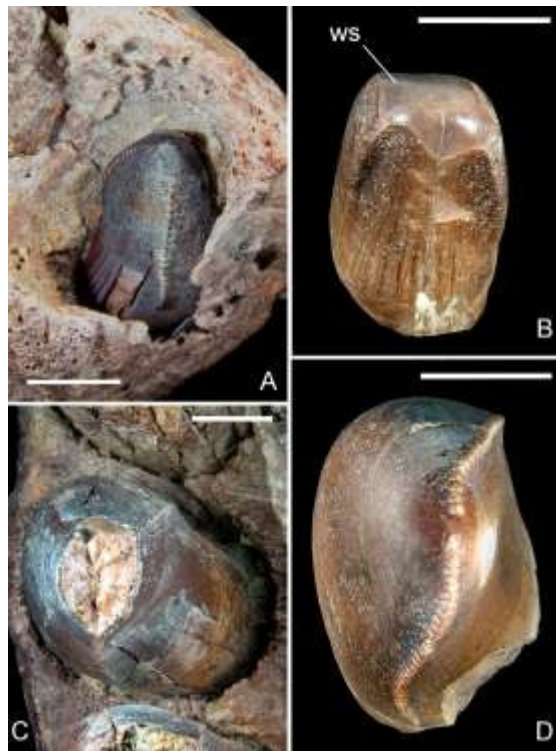
caused by contact with hard food, such as bone and tendon: this animal was both predator and scavenger. The origin of the preserved bones from opposite sides of the upper and lower jaws was a hindrance to the study of how they aligned. However, new technologies helped Cristiano Dal Sasso and colleagues solve the puzzle



Reconstruction of the jaws of Razanandrongobe sakalavae, including the original left dentary, right premaxilla (courtesy of the Natural History Museum of Toulouse), and their counterlateral copies (in grey), printed in 3-D from CT data by FabLab Milan, and then mounted at the Natural History Museum of Milan.



Comparison between the estimated body size of the giant notosuchian crocodyliform Razanandrongobe sakalavae (nicknamed “Razana”) and a human.



Unique to *R. sakalavae* are alveoli with a labiolingual diameter larger than the mesiodistal diameter, the mesial (front) teeth incisiform, and the presence of denticles that are even larger than those of large-bodied theropods, *Tyrannosaurus rex* included. (A) first premaxillary tooth still growing in its alveolus; (B) mesial tooth with an apparent wear surface (ws); (C) fourth premaxillary tooth; (D) lateral tooth. Scale bars = 10 mm. Credit: Michele Zilioli.

MSN- 6 Juillet 2017

<https://www.msn.com/en-us/news/technology/a-giant-jurassic-croc-with-t-rex-teeth/ss-BBDKN8N#image=5>